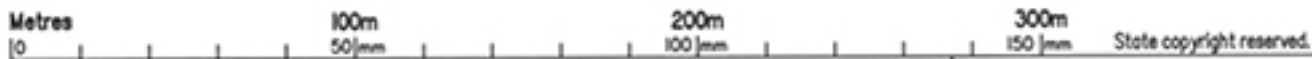
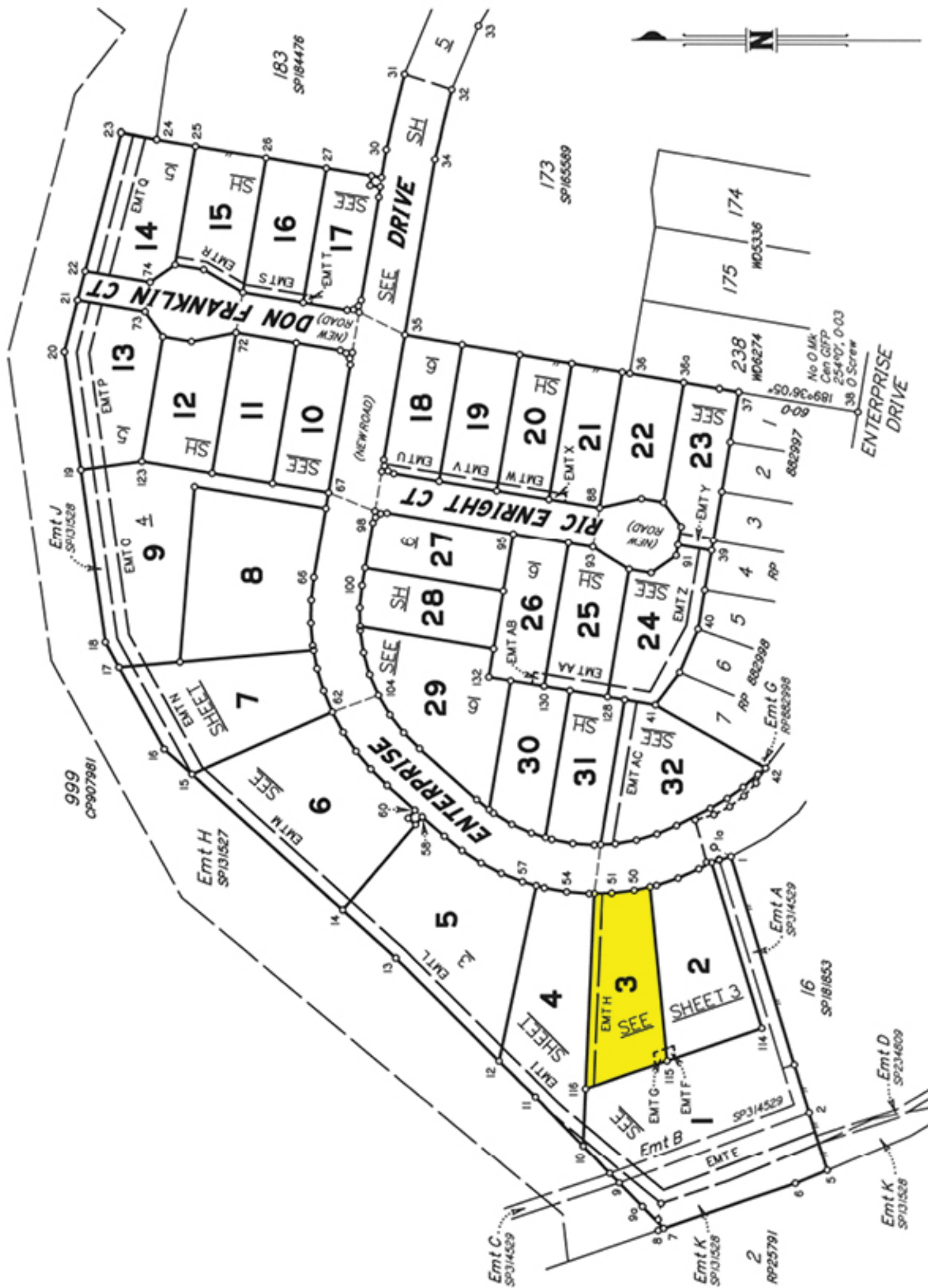


Survey Plan ▶ LOT #3



PLAN OF Lots 1 to 32 and Easement E in Lot 1, Easements F and G in Lots 2 and 3 Respectively, Easements H and I in Lots 3 and 4 Respectively, Easements L to N in Lots 5 to 7 Respectively, Easement Q in Lot 9, Easements P to X in Lots 13 to 21 Respectively, Easements Y, Z, AA and AB in Lots 23 to 26 Respectively and Easement AC in Lot 32
 Cancelling Lots 237 and 998 on SP234830

LOCAL GOVERNMENT: SCENIC RIM R.C. LOCALITY: BEAUDESERT

Meridian: MGA Zone 56 vide CORS Survey Records: NO

Scale: 1 : 2000
 Format: STANDARD

SP316880

T J KELLY SURVEYS PTY LTD (ACN 058 752 417) hereby certify that the land comprised in this plan was surveyed by the corporation, by Carl Joseph HOTZ, Surveying Associate, for whose work the corporation accepts responsibility, under the supervision of Timothy John KELLY, Cadastral Surveyor and that the plan is accurate, that the said survey was performed in accordance with the Survey and Mapping Infrastructure Act 2003 and Surveyors Act 2003 and associated Regulations and Standards and that the said survey was completed on 28/04/2023.

Timothy John Kelly
 Cadastral Surveyor
 ACN 058 752 417
 Date 11.5.2023

Site Plan LOT #3

60230205

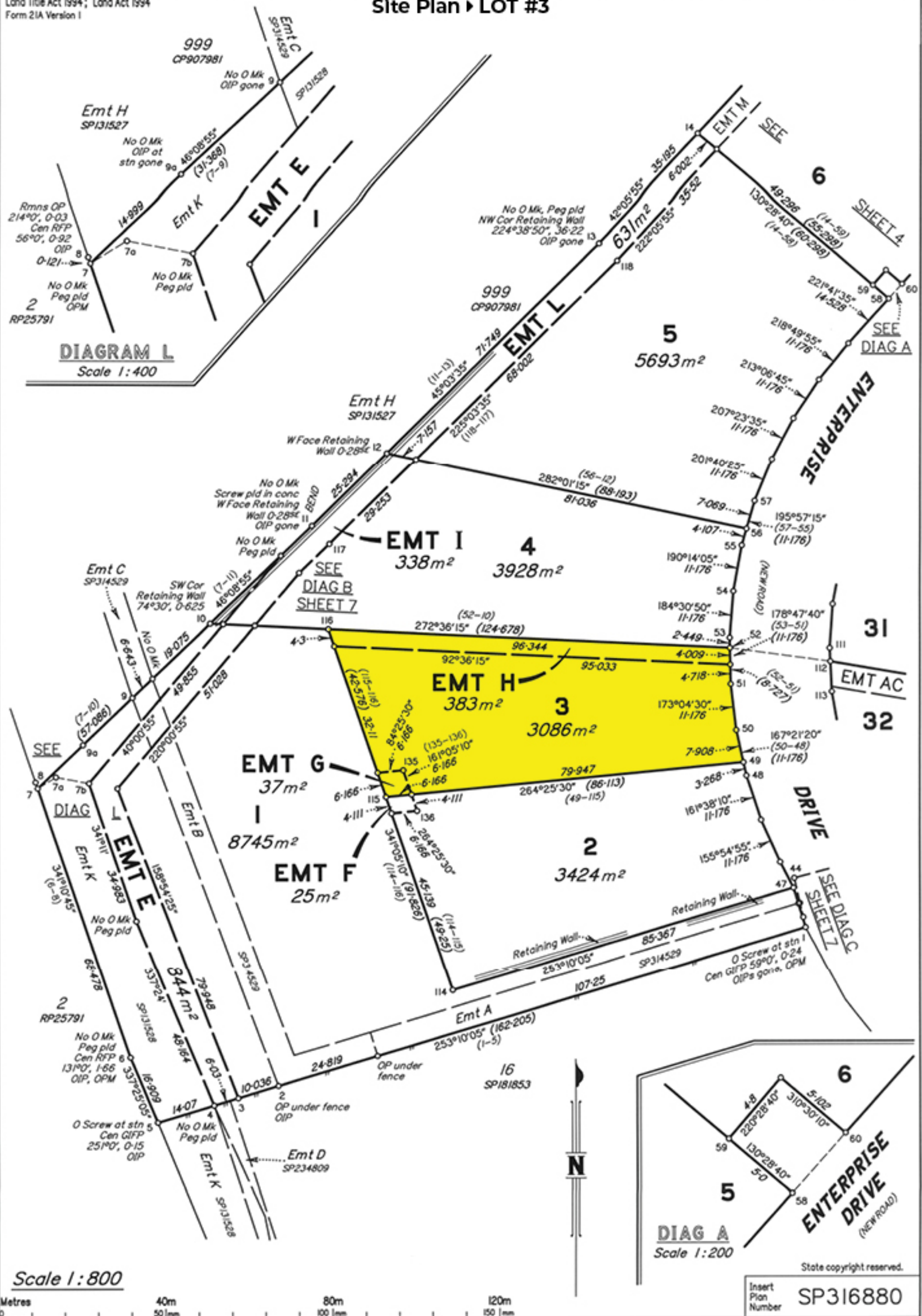


DIAGRAM L
Scale 1:400

SEE
DIAG B
SHEET 7

SHEET 4

SEE
DIAG A

EMT AC

SEE
DIAG C
SHEET 7

DIAG A
Scale 1:200

Scale 1:800



State copyright reserved.

Insert Plan Number **SP316880**

3872